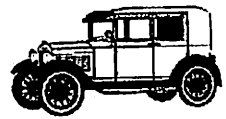


Mitchell Manufacturing



P. O. Box 925 Colusa, CA 95932 ph 800-859-2088 ph 530-458-4500 fax 530-458-4507

WWW.MITCHELLOVERDRIVEMFG.COM

mitchmanfc@frontiernet.net

Mitchell Rear Hub Puller Kit

The only Hub Puller able to remove both types of Model A Ford brake hubs and drums!

NOTE: This Mitchell Manufacturing product is designed to pull rear brake hubs on Ford vehicles from 1928-1948. The puller kit is furnished with two sets of split rings. These will allow you to work on either the early or later types of Ford hubs.

Instructions:

1. Choose which set of split rings will fit your application:
 - A. Black Split Rings will fit hubs with inside groove
 - B. Different Colored Split Rings will fit hubs with outside ring

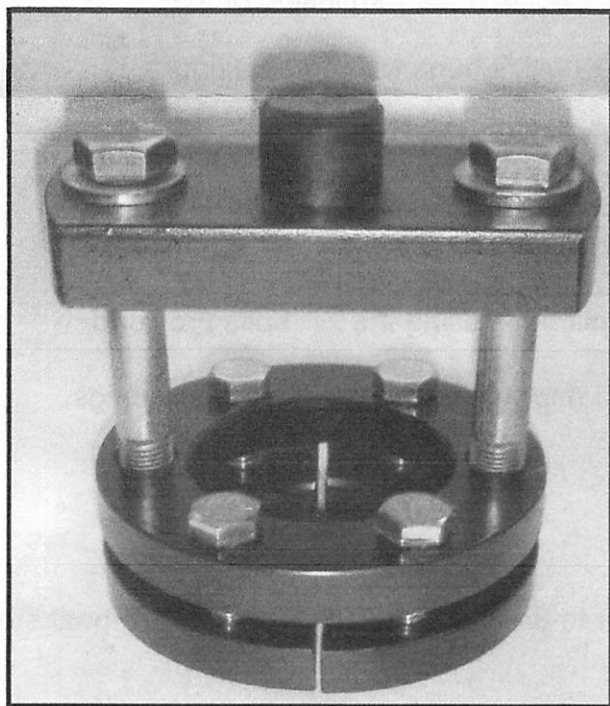
(The outside ring is standard in the early Model A's, but could
could appear in later models, too.)
2. Place split rings around the hub.
3. Slide the solid ring over the hub and bolt to the split rings using the $\frac{3}{8}$ " bolts provided.
4. Slide the $\frac{1}{2}$ " bolts through the **boss** and the solid ring. Thread bolts into the split rings.
5. Check that the $\frac{3}{8}$ " bolts are tight.
6. Tighten the $\frac{1}{2}$ " bolts.
7. Use a hammer to strike the **boss** sharply in order to break loose from the taper. Repeat steps 5 & 6 if necessary.

NOTE: The **boss** is designed to be struck by a hammer.
The sharp shock load is necessary to break the taper loose.

The Model A Times article reproduced on the preceding page describes the usage of this Hub Puller Kit quite well. It is a very simple product to understand, and it is small enough to carry with your other tools while you are touring.

Mitchell Hub Puller

The Model A Ford was equipped with two styles of rear hubs over the four years of production. KR Wilson supplied a puller that would fit the early cars, but it did not have provisions to work on the later hubs. Because some cars would end up with one of each on the rear axle pulling the hubs has been a challenge for the owner. Either owning two sizes of hub pullers, or finding someone who has the correct one when it is needed was necessary. The Mitchell Manufacturing Company has introduced a puller that will handle both sizes of hubs.



This slick little puller has two sets of "C" shaped hardware that fit the two sizes of hub configurations.

One hub has a ring around the outside of the axle-shaft, the other has a groove in the same location. Depending on which you have attach the large or small set of hardware and simple turn the bolts until the hub pops off.

Because it can be taken apart it is quite easy to put one in the tools that are carried on a tour. We have always carried the appropriate puller in case it becomes necessary to remove the hub on the road. This little tool just makes it more convenient.



older versions for comparison

Mitchell Manufacturing can be reached at: PO Box 925, Colusa, CA 95932, or 800-859-2088. The cost of the hub puller is \$80.